



# WATER FLOSSER

Owner's Manual  
LVA2026WHT



The Vive Dental Water Flosser uses pulsing water flows to clean the teeth, and can remove harmful bacteria hidden deep within dental cracks and gums, reaching places which cannot be cleaned by brushing alone.

Traditional toothbrushes are unable to remove scraps of food or harmful bacteria that are deeply hidden, and dental floss only covers a limited area beneath the gums.

## OVERVIEW

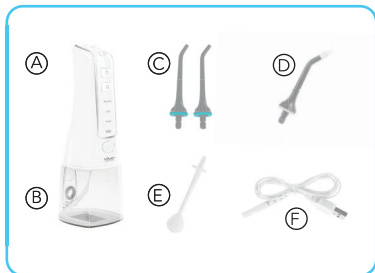
We are constantly answering questions and recording helpful videos to make using your Vive Water Flosser as easy as possible. Check out the included links and QR codes to help you through the process.



To see all of the FAQs in one place visit [vhealth.link/ni4](https://vhealth.link/ni4)

## WHAT'S INCLUDED

- (A) 1x Water Flosser Body
- (B) 1x Reservoir
- (C) 2x Jet Tips
- (D) 1x Orthodontic Tip
- (E) 1x Tongue Cleaner Tip
- (F) 1x Adapter



## PRODUCT DESCRIPTION



Tip Removal Button



Power Button



Mode Button



Modes



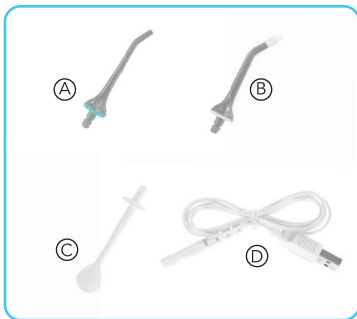
Battery Power Indicator



Charging Port

## PRODUCT ACCESSORIES

- Ⓐ Jet Tip
- Ⓑ Orthodontic Tip
- Ⓒ Tongue Cleaner Tip
- Ⓓ Adapter



# OPERATING PROCEDURE

## Preparing the Device for Use

Extremely Important! **Prior to using for the first time, the device must be fully charged.**

To charge:

1. Assemble the power recharger cord and USB plug.
2. Connect the power charger to a USB compatible power supply.
3. The charging light will indicate the device is charging.

**NOTE:** The product cannot be used while recharging.



For an easy instructional video check out [vhealth.link/mzx](https://vhealth.link/mzx)

## INSTALLATION AND REMOVAL OF THE TIPS

Insert the tip into the spray head hole by pushing it in until you hear a clicking sound.



To change or remove a tip, press on the removal button before removing the tip.



## FILLING THE WATER RESERVIOR

Open the water reservoir lid and fill with water.



**NOTE:** Turn off the device when filling the water reservoir.

## USAGE INSTRUCTIONS

- This product has a memory function, and after switching it back on the water pressure mode will be the same as when the device was switched off.
- The Normal, Soft, and Pulse modes may be switched whether the device is on or off.

- The modes may be changed when the device is switched off, and you can select the mode you like before switching the device back on.
- Irrespective of the mode, after operating for 120 seconds the product will automatically switch off.
- When the pulse mode is used for more than 3 seconds, remaining battery power will be displayed.
- While recharging, the battery icon will flash. When the light is constantly on, this indicates that the power is recharged.
- While in use, if the battery icon is flashing, this indicates that the product's power is insufficient, and recharging is required.
- While recharging, this product cannot be used.
- Rotate the jet tip dial in order to adjust the direction of the water flow.

## RECOMMENDED TECHNIQUES

Holding the device vertically with a slight downward slant, position the tip in the mouth, and direct the tip at teeth before switching on the device.



When the water flow and the gums are at a 90 degree angle, slightly close your mouth in order to avoid the water spraying out, to achieve the best results. First clench the teeth (rear teeth), and begin to apply to the incisors. Slide the water flow along the gums, pausing briefly between teeth, until the area around the gums and the spaces between the teeth are fully cleaned.

## DISASSEMBLY

After using the Water Flosser:

1. Switch off the power.
2. Empty the water tank.
3. Remove the water tank by using both hands. Use your left hand to hold the product body, and your right hand to hold the water tank. Rotate down wards in a counter-clockwise direction.



**NOTE:** When pushing the tank up, be careful with the handle.

# BATTERY MAINTENANCE AND HANDLING

## Battery Maintenance

- Prior to initial usage the device must be fully charged. A full charge will take approximately four hours.
- If to be stored for a long period of time, fully charge the device in advance of storing.
- In order to maximize the usage of battery life of the battery, please promptly recharge when power is insufficient.

## Battery Handling

This device includes a lithium battery which cannot be changed. Towards the end of battery life, dispose of the device in a local recycling center.

## Common Problems and Solutions

| Problem   | Reason   | Solution   |
|---|--|--|
| Leakage of water between jet tip and screw part | The seal ring on the fixed socket for the jet tip is damaged, and the jet tip cannot be installed properly | Contact the retailer for repair and install the jet tip properly |
| Water tank leaks water                          | Seal ring is loose   | Re-install correctly   |
| Inadequate pressure                             | Low voltage usage  | Use after recharging   |
| Device cannot be switched on                    | Low voltage usage  | Use after recharging   |
| Product is not discharging water                | Filtration net is clogged  | Clean the filtration net   |
| Water tank sides are leaking water              | Air entry hole is producing water  | Standard phenomenon high air pressure principle                  |



## USE CONSIDERATIONS

1. When first starting to use the device it is best to use on “soft mode,” to avoid bleeding gums and to allow time for the gums to adapt to the water pressure. After consistent use for two weeks there should be improvements in adaptation. If bleeding is excessive or bleeding continues after two weeks, chronic gum inflammation could be an issue, and it is recommended that professional dental treatment be sought.
2. It is not recommended that the product be used by children, or people with dental implants, oral ulcers, or open oral sores.



**vive**®  
— D E N T A L —